

The logo for PRCGASKET SOLUTIONS is centered on a black background with a fine, repeating grid pattern. The word "PRCGASKET" is rendered in a bold, italicized, sans-serif font. The letters "PRC" are white with a black outline, while "GASKET" is green with a black outline. A thick green horizontal bar is positioned below "PRCGASKET", and the word "SOLUTIONS" is written in white, italicized, sans-serif font on top of this bar.

PRCGASKET
SOLUTIONS

PERFORMANCE PARTS



ProGasket Removes the Hassle and Boosts Performance with Smart Check

ProGasket's Smart Check program is a one-step, one-price way to ensure that you have high-performing refrigeration gaskets in all your equipment, throughout the year. Smart Check saves you time, energy and money – and protects your profits.

Smart Check Includes:

An on-site inspection of all refrigeration doors, with bar-coding for gasket identification and warranty tracking

A detailed digital report with the inspection results, as well as details on any associated costs required to address issues discovered in the inspection

Professional installation with a 2-year warranty on parts and labor

A FREE yearly inspection to check all warranty gaskets and replacement if required

A FREE annual historical report on the work and gasket performance for each store

Smart Check Advantages:

Increase your profits with reduced energy use, downtime and product loss.

Maximize your impact with historical reporting data on all your gaskets.

Smart Check Facts:

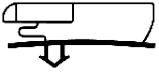
Every 10 percent reduction in energy use increases your profits by 16%

Refrigeration accounts for 43% of grocery retailers' electrical costs.

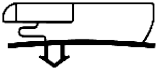
Reliable gaskets save you money and prevent energy loss!

Make a smart investment in strong gasket performance with Smart Check today!

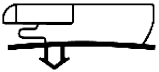
ANTHONY PARTS



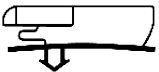
PART# PROG 01
DESC. ANTHONY 806 29 7/8 X 65



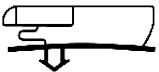
PART# PROG 02
DESC. ANTHONY 808 29 7/8 X 62 13/16



PART# PROG 04
DESC. ANTHONY 804 29 7/8 X 60 11/16



PART# PROG 07
DESC. ANTHONY 810 29 3/16 X 60 3/16



PART# PROG 09
DESC. ANTHONY 815 29 3/16 X 66 9/16



PART# PROG 12
DESC. ANTHONY HOLD OPEN SLIDE



PART# PROG 17
DESC. ANTHONY TORQUE ROD



PART# PROG 18
DESC. ANTHONY CONTACT PLATE 30" HORZ



PART# PROG 20
DESC. ANTHONY CONTACT PLATE 65" VERT

ANTHONY PARTS



PART# PROG 45
DESC. ANTHONY DETENT BOLT HOLD OPEN



PART# PROG 46
DESC. ANTHONY DETENT SPACER HOLD OPEN



PART# PROG 47
DESC. ANTHONY PIVOT HOLD OPEN



PART# PROG 48
DESC. ANTHONY OVERSIZE DETENT HOLD OPEN



PART# PROG 49
DESC. ANTHONY OVERSIZE SPACER HOLD OPEN



PART# PROG 50
DESC. ANTHONY OVERSIZE PIVOT HOLD OPEN



PART# PROG 51
DESC. ANTHONY HOLD OPEN SCREW



PART# PROG 54
DESC. ANTHONY 3 WIRE PIN



PART# PROG 55
DESC. ANTHONY HINGE PIN NO WIRE

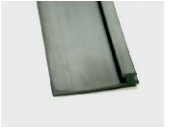
ANTHONY PARTS



PART# PROG 70
DESC. ANTHONY 8' ZIP STRIP



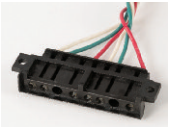
PART# PROG 92
DESC. ANTHONY HANDLE REPLACEMENT SCREW



PART# PROG 94
DESC. ANTHONY KEYSER BLADE



PART# PROG 130
DESC. ANTHONY HOLD OPEN KIT



PART# PROG 134
DESC. ANTHONY DOUBLE PLUG



PART# PROG 137
DESC. ANTHONY HANDLE SILVER



PART# PROG 140
DESC. ANTHONY SINGLE PLUG

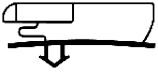


PART# PROG 141
DESC. ANTHONY TORQUE MASTER SILVER



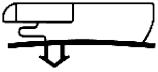
PART# PROG 142
DESC. ANTHONY TORQUE MASTER BLACK

ANTHONY PARTS



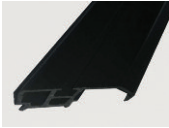
PART# PROG 149

DESC. ANTHONY 807 29 7/8 X 73 1/16



PART# PROG 255

DESC. ANTHONY SPECIAL SIZE GASKET



PART# PROG 333

DESC. ANTHONY TRACK



PART# PROG 368

DESC. ANTHONY DOOR HEATER REPAIR



PART# PROG 369

DESC. ANTHONY 3 DOOR FRAME HEATER REPAIR



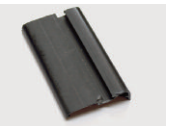
PART# PROG 370

DESC. 4 DOOR FRAME HEATER REPAIR



PART# PROG 371

DESC. ANTHONY 5 DOOR FRAME HEATER REPAIR



PART# PROG 392

DESC. ANTHONY TRACK LONG

ARDCO PARTS



PART# PROG 26
DESC. ARDCO HOLD OPEN KIT



PART# PROG 28
DESC. ARDCO BACK STOP



PART# PROG 29
DESC. ARDCO HOLD OPEN SPRING



PART# PROG 30
DESC. ARDCO BOTTOM PLATE



PART# PROG 53
DESC. ARDCO BACKSTOP SCREW



PART# PROG 329
DESC. SPECIAL ARDCO GASKET



PART# PROG 85
DESC. ARDCO/GEM PIN TOP/BOTTOM



PART# PROG 86
DESC. ARDCO/GEM TORQUE ROD



PART# PROG 87
DESC. ARDCO/GEM SPRING

GEMTRON PARTS



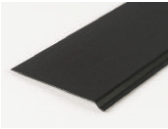
PART# PROG 82
DESC. GEMTRON SINGLE FEMALE PLUG



PART# PROG 83
DESC. GEMTRON DOUBLE FEMALE PLUG



PART# PROG 84
DESC. GEMTRON TORQUE ADJUSTER



PART# PROG 88
DESC. GEMTRON CONTACT PLATE 30"



PART# PROG 89
DESC. GEMTRON VINYL TRACK



PART# PROG 90
DESC. GEMTRON CORNER BLOCK FOR PIN/WEDGE



PART# PROG 91
DESC. GEMTRON CORNER BLOCK SCREW



PART# PROG 163
DESC. GEMTRON SL 100 29 5/16 X 55 11/16



PART# PROG 164
DESC. GEMTRON SL 103 29 15/16 X 58 13/16

GEMTRON PARTS



PART# PROG 165
DESC. GEMTRON SL 104 29 15/16 X 61 1/16



PART# PROG 166
DESC. GEMTRON SL 151 29 5/16 X 60 3/8



PART# PROG 167
DESC. GEMTRON SL 165 29 1/4 X 66 1/2



PART# PROG 221
DESC. GEMTRON HINGE PIN WEDGE /SCREW



PART# PROG 234
DESC. GEMTRON BOLT



PART# PROG 253
DESC. GEMTRON HOLD OPENS BOTTOM



PART# PROG 256
DESC. GEMTRON 3 WIRE PIN



PART# PROG 303
DESC. GEMTRON 5 DOOR FRAME HEATER



PART# PROG 310
DESC. GEMTRON WASHER

GEMTRON PARTS



PART# PROG 315
DESC. GEMTRON PLASTIC HANDLE



PART# PROG 323
DESC. GEMTRON MALE HEATER PLUG



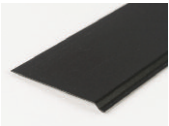
PART# PROG 324
DESC. GEMTRON FEMALE HEATER PLUG



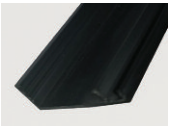
PART# PROG 329
DESC. GEMTRON SPECIAL SWINGLINE GASKET



PART# PROG 331
DESC. GEMTRON PIN RECEIVER



PART# PROG 334
DESC. GEMTRON CONTACT PLATE 70"



PART# PROG 342
DESC. GEMTRON MULLION



PART# PROG 343
DESC. GEMTRON CORNER BLOCK FOR 3 WIRE PIN



PART# PROG 376
DESC. GEMTRON HEATER STRIP

GEMTRON PARTS



PART# PROG 377
DESC. GEMTRON CORNER RIGHT ANGLE



PART# PROG 378
DESC. GEMTRON CORNER LEFT ANGLE

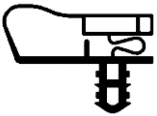


PART# PROG 379
DESC. GEMTRON CORNER NO PIN



PART# PROG 393
DESC. GEMTRON CROME HANDEL

HUSSMANN PARTS



PART# PROG 05
DESC. HUSSMANN 006 29 7/8 X 65 1/16



PART# PROG 31
DESC. HUSSMANN HOLD OPEN KIT



PART# PROG 52
DESC. HUSSMANN HOLD OPEN SCREW

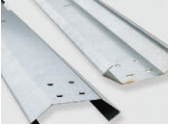


PART# PROG 63
DESC. HUSSMANN BUSHING BOTTOM
orders@progasketsolutions.com

HUSSMANN PARTS



PART# PROG 66
DESC. HUSSMANN BUMPER TRACK 3"



PART# PROG 67
DESC. HUSSMANN BUMPER RETAINER 4"



PART# PROG 68
DESC. HUSSMANN 3" BUMPER 12' STRIP



PART# PROG 69
DESC. HUSSMANN 4" BUMPER 12' STRIP



PART# PROG 71
DESC. HUSSMANN PIN WITH BUSHING



PART# PROG 72
DESC. HUSSMANN BLACK TOP HINGE SOCKET



PART# PROG 73
DESC. HUSSMANN BLACK BOTTOM HINGE SOCKET

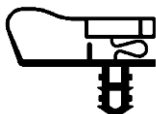


PART# PROG 74
DESC. HUSSMANN TOP PIN HINGE



PART# PROG 75
DESC. HUSSMANN TOP PIN HINGE SPRING

HUSSMANN PARTS



PART# PROG 177
DESC. HUSSMANN 1059 29 3/4 X 72 7/8



PART# PROG 187
DESC. HUSSMANN TORQUE ROD



PART# PROG 191
DESC. HUSSMANN 4 DOOR FRAME HEATER



PART# PROG 192
DESC. HUSSMANN 5 DOOR FRAME HEATER



PART# PROG 325
DESC. HUSSMANN 3 DOOR HEATER



PART# PROG 332
DESC. HUSSMANN PIN TOP HINGE SLEEVE



PART# PROG 325
DESC. HUSSMANN 3 DOOR HEATER



PART# PROG 10
DESC. STYLELINE 002 29 X 64 5/8



PART# PROG 176
DESC. STYLELINE COMMERCIAL DOOR STUD

orders@progasketsolutions.com

STYLELINE PARTS



PART# PROG 307
DESC. STYLELINE COMMERCIAL SPECIAL GASKET



PART# PROG 309
DESC. STYLELINE COMMERCIAL TORQUE ROD KIT



PART# PROG 326
DESC. STYLELINE COMMERCIAL BOTTOM HINGE KIT



PART# PROG 345
DESC. STYLELINE COMMERCIAL DOOR HANDLE



PART# PROG 365
DESC. STYLELINE COMMERCIAL HANDLE BRACKET SET



PART# PROG 372
DESC. STYLELINE 407 GASKET 3 SIDED

MISCELLANEOUS PERFORMANCE PARTS

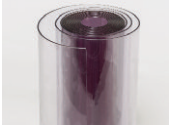


PART# PROG 24
DESC. ACCESS COVER BLACK

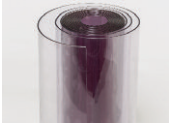


PART# PROG 35
DESC. 8" CURTAIN STRIP 96" OR LESS

MISCELLANEOUS PERFORMANCE PARTS



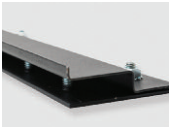
PART# PROG 36
DESC. 8" CURTAIN STRIP 96" OR MORE



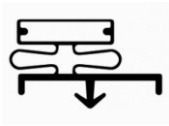
PART# PROG 37
DESC. 12" CURTAIN 96" OR LESS



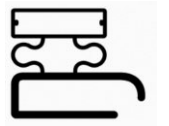
PART# PROG 38
DESC. 12" CURTAIN 96" OR MORE



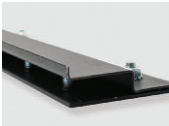
PART# PROG 39
DESC. STRIP CURTAIN HANGER HD



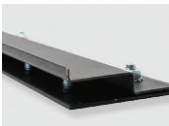
PART# PROG 43
DESC. WALK IN COOLER GASKET 405



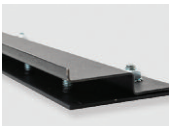
PART# PROG 44
DESC. 202 GASKET VARIOUS SIZE



PART# PROG 56
DESC. 36" HANGER

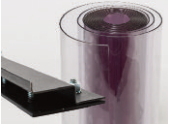


PART# PROG 57
DESC. 54" HANGER

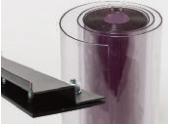


PART# PROG 58
DESC. UNIVERSAL STRIP CURTAIN HANGER 60"

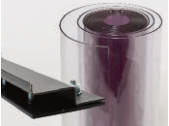
MISCELLANEOUS PERFORMANCE PARTS



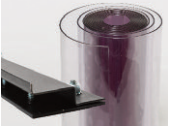
PART# PROG 59
DESC. 80 X 110 CURTAIN KIT



PART# PROG 60
DESC. 74 X 110 CURTAIN KIT



PART# PROG 61
DESC. 62 X 92 CURTAIN KIT



PART# PROG 62
DESC. 44 X 85 CURTAIN KIT



PART# PROG 64
DESC. DOOR SWEEP 72" OR LESS



PART# PROG 65
DESC. DOOR SWEEP 72" OR MORE



PART# PROG 76
DESC. TAP FOR OVERSIZE BOLT



PART# PROG 77
DESC. DRILL BIT FOR OVERSIZE BOLT



PART# PROG 96
DESC. CORNER 12" PART#GARD-ADJ-12

MISCELLANEOUS PERFORMANCE PARTS



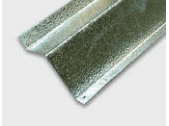
PART# PROG 97
DESC. JAMISON 9' SIDE



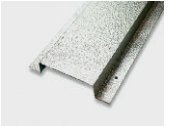
PART# PROG 98
DESC. JAMISON 6' TOP



PART# PROG 132
DESC. ACCESS COVER



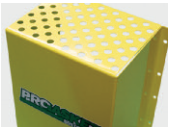
PART# PROG 197
DESC. CORNER WALL BATTEN WHITE



PART# PROG 198
DESC. WALL BATTEN WHITE



PART# PROG 233
DESC. SEAL TAPE (ROLL)



PART# PROG 235
DESC. LEAK DETECTOR COVERS

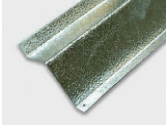


PART# PROG 254
DESC. 8" LOW TEMP CURTAINS



PART# PROG 300
DESC. WALL BATTEN RAW

MISCELLANEOUS PERFORMANCE PARTS



PART# PROG 301
DESC. CORNER BATTEN RAW



PART# PROG 302
DESC. FLOOR BATTEN RAW



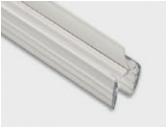
PART# PROG 304
DESC. LED LIGHTS 5'



PART# PROG 305
DESC. LED LIGHTS 6'



PART# PROG 316
DESC. VISTA C WIPER BLACK



PART# PROG 317
DESC. VISTA B WIPER CLEAR



PART# PROG 327
DESC. FOAM GASKET



PART# PROG 328
DESC. LED LIGHT 4'



PART# PROG 337
DESC. CASE OF CAULK FOR SEAL WORK

MISCELLANEOUS PERFORMANCE PARTS



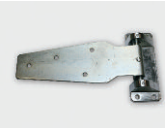
PART# PROG 338
DESC. WALL TO FLOOR BATTEN WHITE



PART# PROG 341
DESC. WALK IN DOOR CLOSER



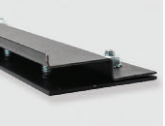
PART# PROG 359
DESC. REGENT GASKET



PART# PROG 366
DESC. DOOR HINGE K1248



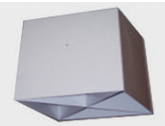
PART# PROG 374
DESC. REFURBISHED DOORS



PART# PROG 386
DESC. 48" HANGER



PART# PROG 387
DESC. 65" HANGER

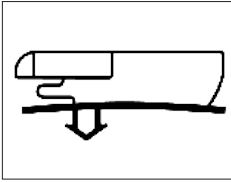


PART# PROG 388
DESC. 3 SPEED FAN

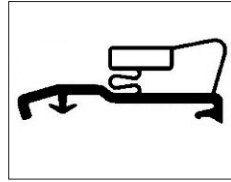


PART# PROG 402
DESC. SINGLE DOOR HEATER WIRE

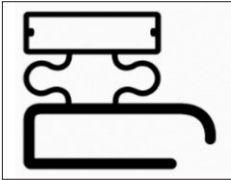
PERFORMANCE GASKETS



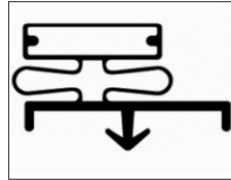
**Anthony
Door Gasket**
PVC Magnetic Snap In



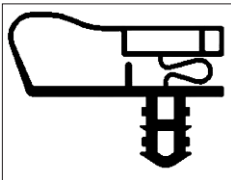
**Ardco
Door Gasket**
PVC Magnetic Snap In



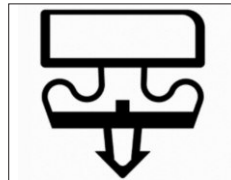
**#202
Door Gasket**
PVC Magnetic Screw In



**#405
Door Gasket**
PVC Magnetic Snap In



**Hussmann
Door Gasket**
PVC Magnetic Snap In

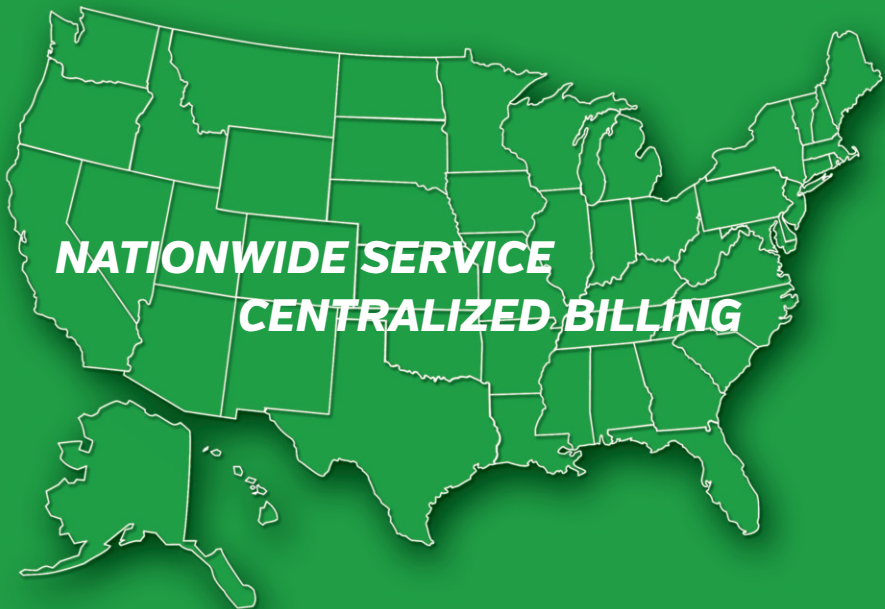


**#407
Door Gasket**
PVC Magnetic Snap In

Reduce Energy, Downtime, and Product Loss...Easily

You depend on your commercial refrigeration gaskets to perform with efficiency and reliability. Faulty gaskets can be very costly, not to mention a hassle. This is where ProGasket can help reduce downtime, electrical costs, and loss of product. We ensure your gaskets are effective, and to detect and address looming problems before they create issues for you.

With 30 years combined experience. ProGasket has been the complete commercial refrigeration gasket solution to grocery, convenience stores and restaurants across the nation. ProGasket uses only top quality, U.S. factory welded OEM-replacement gaskets.





*ProGasket recycles all gaskets,
adding nothing to landfills.*



PROGASKET SOLUTIONS

1530 CONSTRUCTION WAY VAN BUREN, AR 72956

888-279-0261 • 479-922-5130

PROGASKETSOLUTIONS.COM